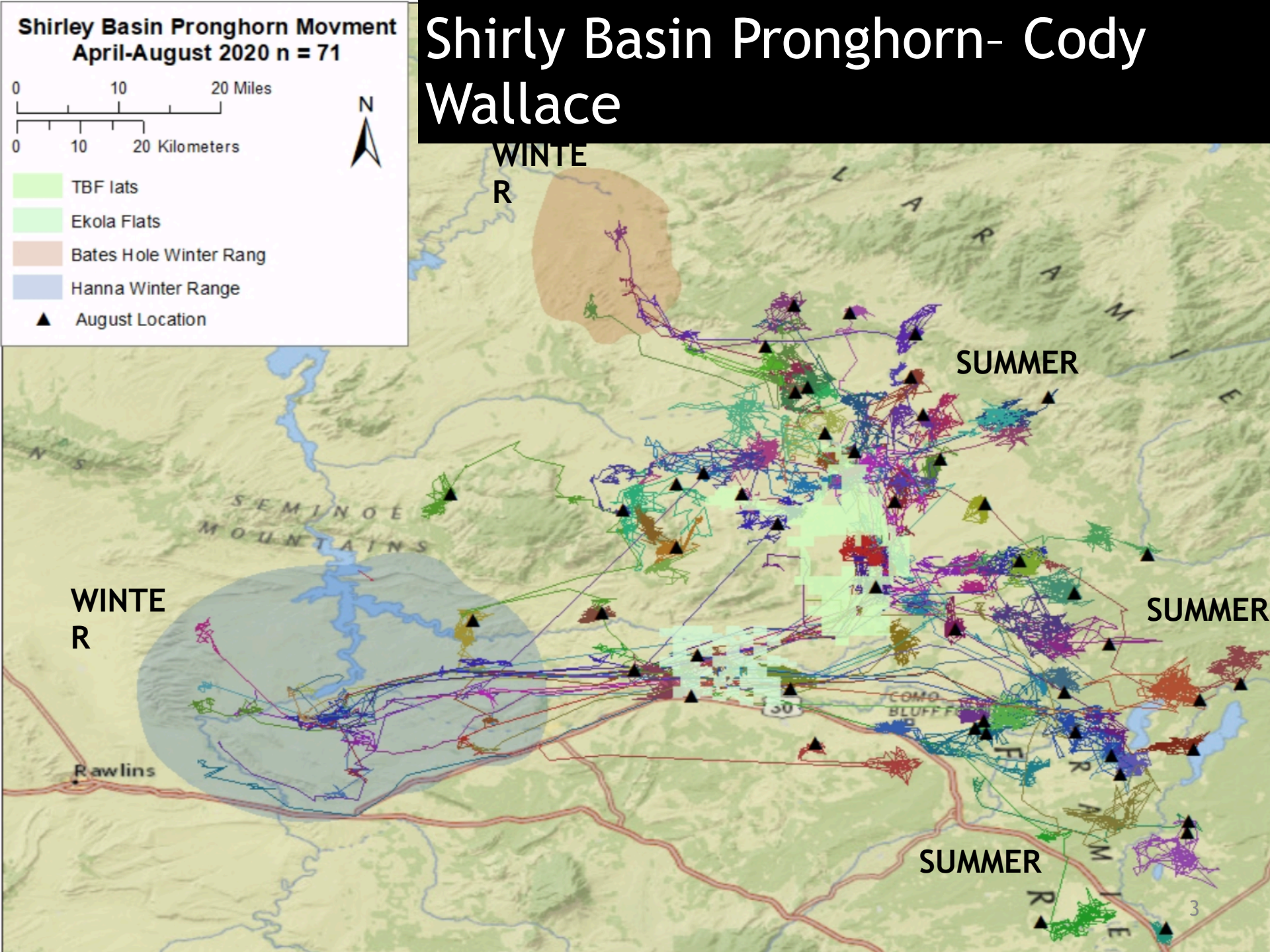


Shirley Basin Pronghorn Project

Matt Kauffman, Lee Knox, Teal Cufaude, Embere Hall, Cody Wallace

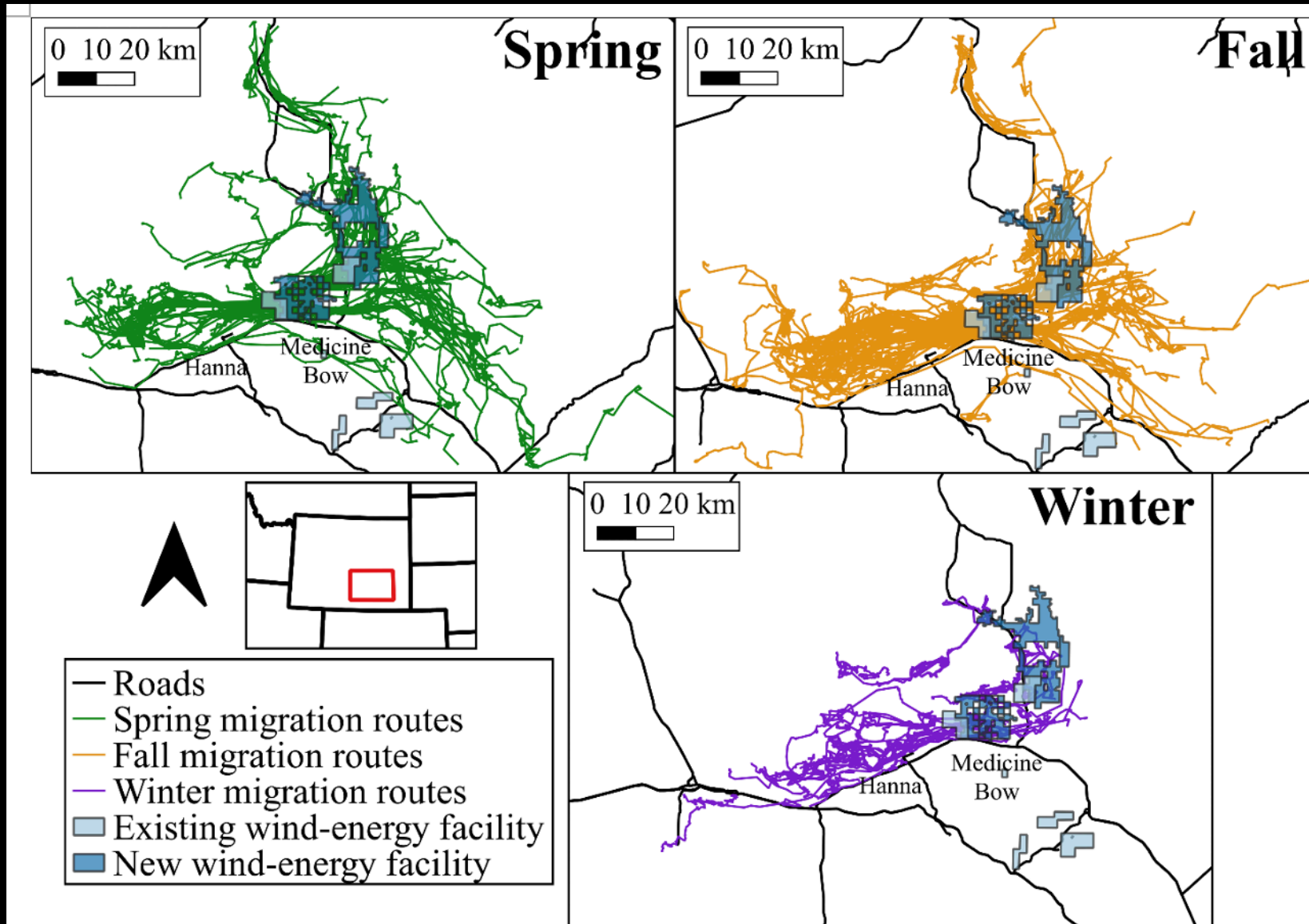


Shirly Basin Pronghorn- Cody Wallace

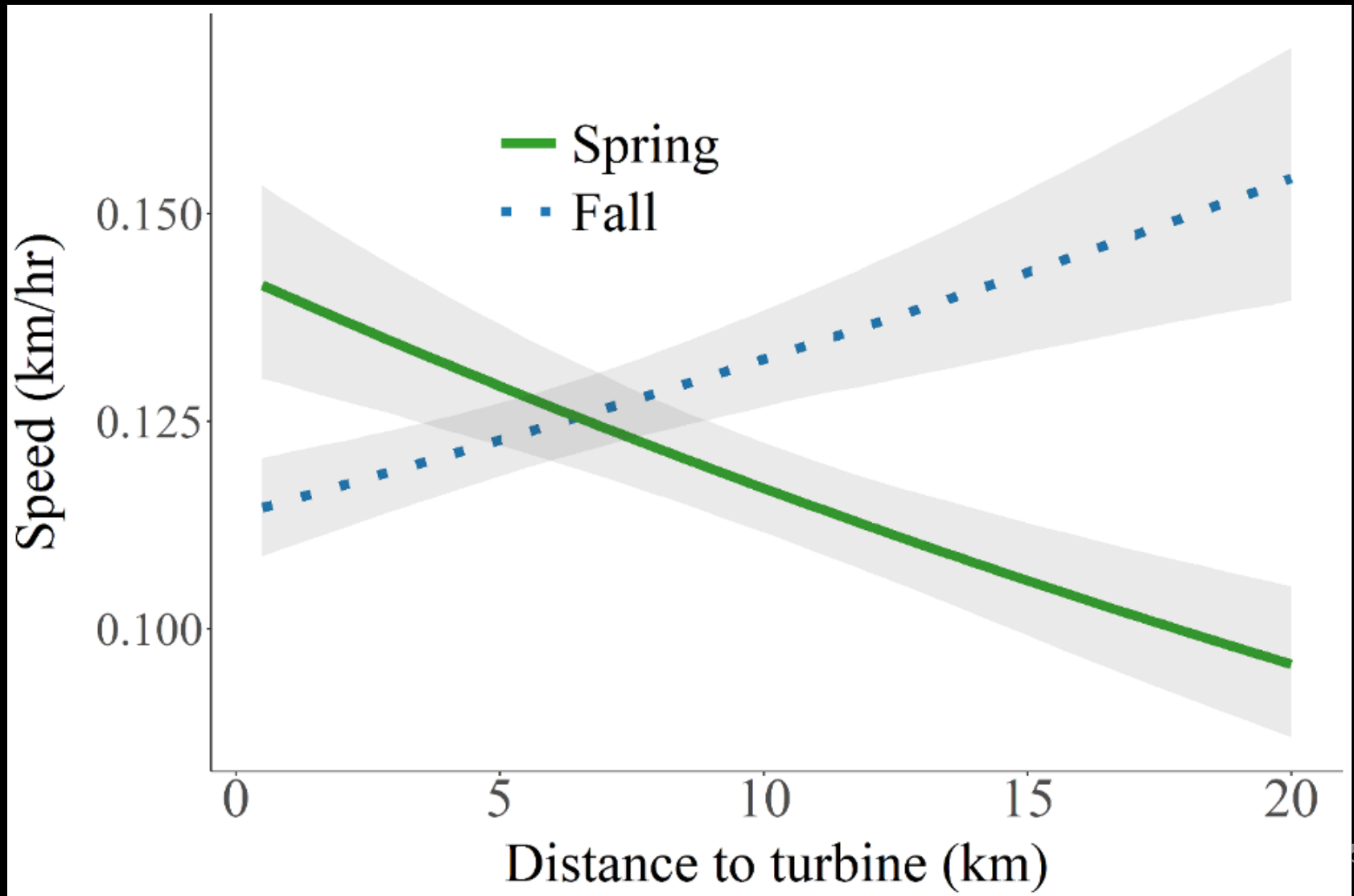


WIND-ENERGY DEVELOPMENT ALTERS PRONGHORN MIGRATION AT MULTIPLE SCALES

- Peer reviewed study submitted for publication. Currently in review.



Pronghorn living near wind turbines move faster during spring migration, slower in fall



Pronghorn near wind turbines have lower fidelity

